

# **Ecosystem Indicators Project # 2005-UNR-578**

The objectives of this project were to have the University of Nevada, Reno (UNR); 1) produce a geomorphology GIS dataset of Clark County, 2) update and refine the vegetation based ecosystem GIS dataset currently being used by the Desert Conservation Program, and 3) produce a series of pilot vegetation models. The results of the geomorphology GIS dataset is shown on the poster named Preliminary Geomorphology and Surficial Geologic Map of Clark County. The results of the vegetation based ecosystems dataset is shown on the poster named Clark County Ecosystems. In the course of developing the pilot vegetation models UNR tested and combined geomorphology data and numerous texture vegetation outputs generated from Quickbird satellite imagery with various remote sensing applications. This was done for the entire county (Pilot Area 3) and Ivanpah Valley (Pilot Area 1). We conducted additional field data collection in Piute Valley (Pilot Area 2) and Ivanpah Valley (Pilot Area 1) to further explore the relationship between *Yucca sp.*, topographic position, geomorphology and bedrock composition mapping. The results of pilot vegetation models are not displayed at this symposium but the final report and data are available. In addition, UNR developed a county-wide model of *Yucca brevifolia* (Joshua Tree). The results of the Joshua Tree model are shown on the poster named Clark County Joshua Tree Model. Each of the above objective datasets and final reports are available on DVD and provided at this symposium.

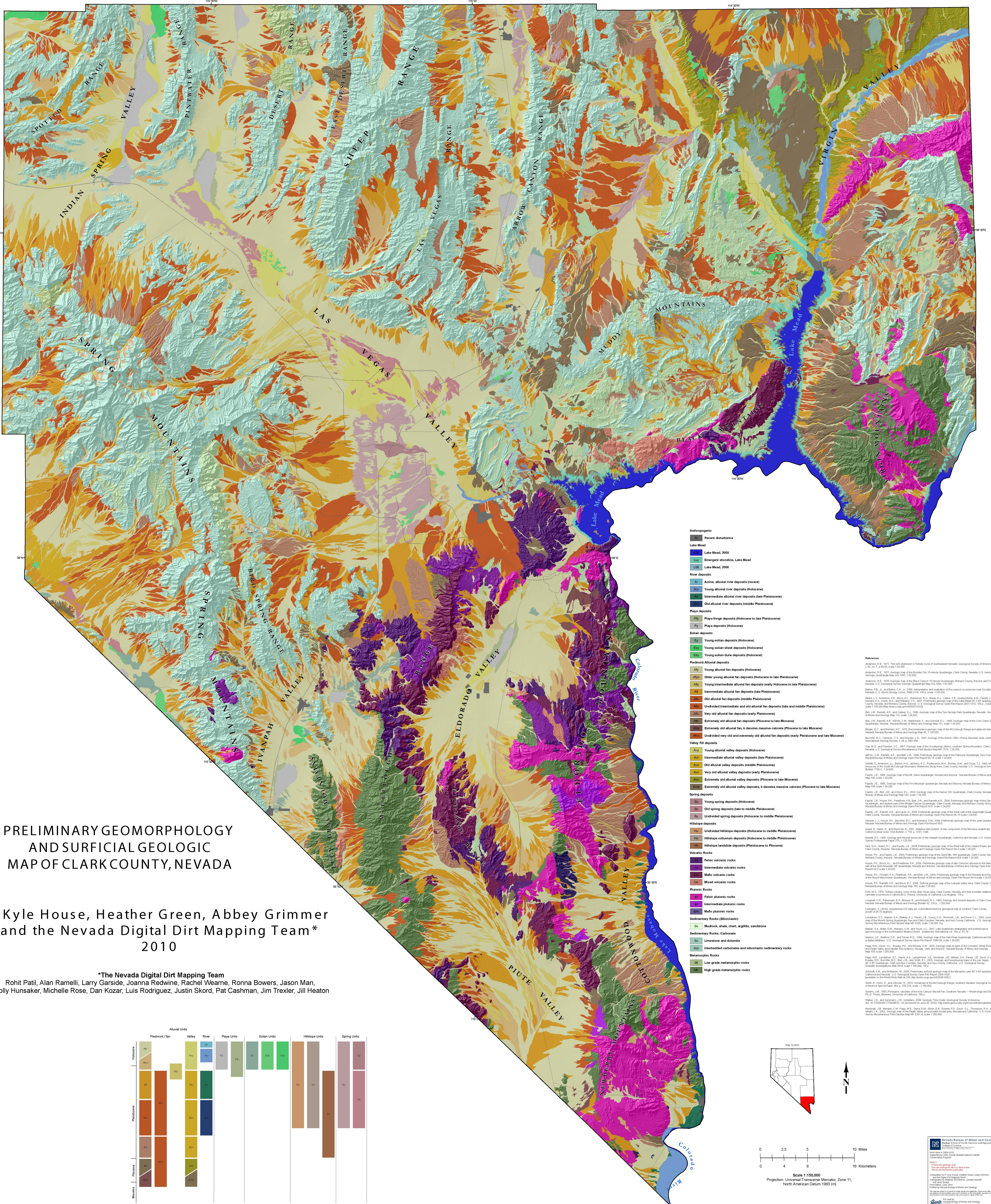


desert conservation  
PROGRAM

**Clark County**  
**Ecosystem Indicators**  
**Project # 2005-UNR-578**

This information is for display only.  
No liability is assumed as to the  
accuracy of the data delineated  
hereon. (Draft - 7/26/11)  
Clark\_County\_578text\_poster.mxd



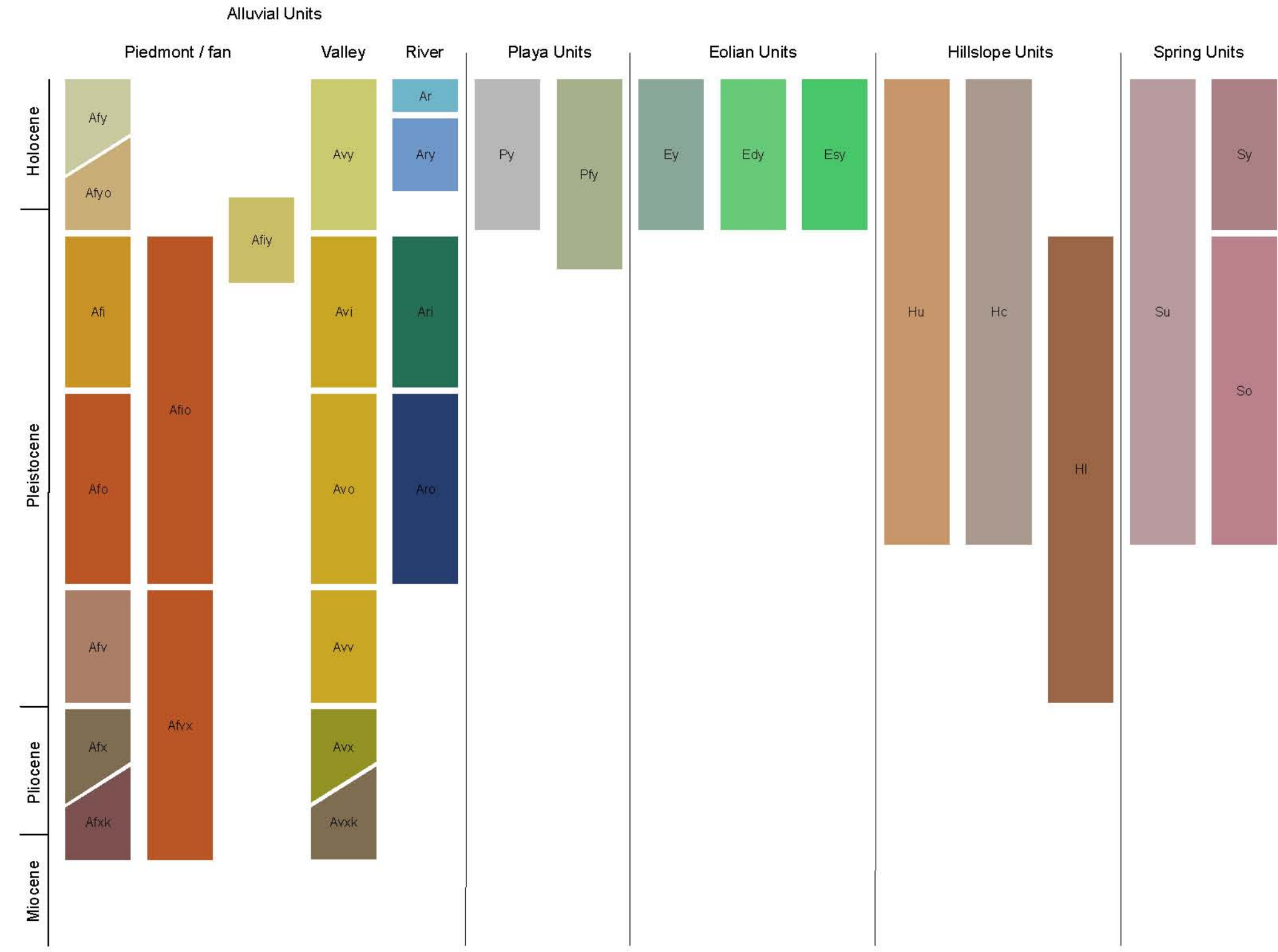


**PRELIMINARY GEOMORPHOLOGY  
AND SURFICIAL GEOLOGIC  
MAP OF CLARK COUNTY, NEVADA**

**P. Kyle House, Heather Green, Abbey Grimmer  
and the Nevada Digital Dirt Mapping Team\*  
2010**

\*The Nevada Digital Dirt Mapping Team

Rohit Patil, Alan Ramelli, Larry Garside, Joanna Redwine, Rachel Wearne, Ronna Bowers, Jason Man,  
Molly Hunsaker, Michelle Rose, Dan Kozar, Luis Rodriguez, Justin Skord, Pat Cashman, Jim Trexler, Jill Heaton



**References**

Anderson, R.E., 1971. The geology of the Nevada Desert. Nevada Bureau of Mines and Geology Bulletin 102, p. 1-45, 104, 105, 106, 107, 108, 109, 110, 111, 112, 113, 114, 115, 116, 117, 118, 119, 120, 121, 122, 123, 124, 125, 126, 127, 128, 129, 130, 131, 132, 133, 134, 135, 136, 137, 138, 139, 140, 141, 142, 143, 144, 145, 146, 147, 148, 149, 150, 151, 152, 153, 154, 155, 156, 157, 158, 159, 160, 161, 162, 163, 164, 165, 166, 167, 168, 169, 170, 171, 172, 173, 174, 175, 176, 177, 178, 179, 180, 181, 182, 183, 184, 185, 186, 187, 188, 189, 190, 191, 192, 193, 194, 195, 196, 197, 198, 199, 200, 201, 202, 203, 204, 205, 206, 207, 208, 209, 210, 211, 212, 213, 214, 215, 216, 217, 218, 219, 220, 221, 222, 223, 224, 225, 226, 227, 228, 229, 230, 231, 232, 233, 234, 235, 236, 237, 238, 239, 240, 241, 242, 243, 244, 245, 246, 247, 248, 249, 250, 251, 252, 253, 254, 255, 256, 257, 258, 259, 260, 261, 262, 263, 264, 265, 266, 267, 268, 269, 270, 271, 272, 273, 274, 275, 276, 277, 278, 279, 280, 281, 282, 283, 284, 285, 286, 287, 288, 289, 290, 291, 292, 293, 294, 295, 296, 297, 298, 299, 300, 301, 302, 303, 304, 305, 306, 307, 308, 309, 310, 311, 312, 313, 314, 315, 316, 317, 318, 319, 320, 321, 322, 323, 324, 325, 326, 327, 328, 329, 330, 331, 332, 333, 334, 335, 336, 337, 338, 339, 340, 341, 342, 343, 344, 345, 346, 347, 348, 349, 350, 351, 352, 353, 354, 355, 356, 357, 358, 359, 360, 361, 362, 363, 364, 365, 366, 367, 368, 369, 370, 371, 372, 373, 374, 375, 376, 377, 378, 379, 380, 381, 382, 383, 384, 385, 386, 387, 388, 389, 390, 391, 392, 393, 394, 395, 396, 397, 398, 399, 400, 401, 402, 403, 404, 405, 406, 407, 408, 409, 410, 411, 412, 413, 414, 415, 416, 417, 418, 419, 420, 421, 422, 423, 424, 425, 426, 427, 428, 429, 430, 431, 432, 433, 434, 435, 436, 437, 438, 439, 440, 441, 442, 443, 444, 445, 446, 447, 448, 449, 450, 451, 452, 453, 454, 455, 456, 457, 458, 459, 460, 461, 462, 463, 464, 465, 466, 467, 468, 469, 470, 471, 472, 473, 474, 475, 476, 477, 478, 479, 480, 481, 482, 483, 484, 485, 486, 487, 488, 489, 490, 491, 492, 493, 494, 495, 496, 497, 498, 499, 500, 501, 502, 503, 504, 505, 506, 507, 508, 509, 510, 511, 512, 513, 514, 515, 516, 517, 518, 519, 520, 521, 522, 523, 524, 525, 526, 527, 528, 529, 530, 531, 532, 533, 534, 535, 536, 537, 538, 539, 540, 541, 542, 543, 544, 545, 546, 547, 548, 549, 550, 551, 552, 553, 554, 555, 556, 557, 558, 559, 560, 561, 562, 563, 564, 565, 566, 567, 568, 569, 570, 571, 572, 573, 574, 575, 576, 577, 578, 579, 580, 581, 582, 583, 584, 585, 586, 587, 588, 589, 590, 591, 592, 593, 594, 595, 596, 597, 598, 599, 600, 601, 602, 603, 604, 605, 606, 607, 608, 609, 610, 611, 612, 613, 614, 615, 616, 617, 618, 619, 620, 621, 622, 623, 624, 625, 626, 627, 628, 629, 630, 631, 632, 633, 634, 635, 636, 637, 638, 639, 640, 641, 642, 643, 644, 645, 646, 647, 648, 649, 650, 651, 652, 653, 654, 655, 656, 657, 658, 659, 660, 661, 662, 663, 664, 665, 666, 667, 668, 669, 670, 671, 672, 673, 674, 675, 676, 677, 678, 679, 680, 681, 682, 683, 684, 685, 686, 687, 688, 689, 690, 691, 692, 693, 694, 695, 696, 697, 698, 699, 700, 701, 702, 703, 704, 705, 706, 707, 708, 709, 710, 711, 712, 713, 714, 715, 716, 717, 718, 719, 720, 721, 722, 723, 724, 725, 726, 727, 728, 729, 730, 731, 732, 733, 734, 735, 736, 737, 738, 739, 740, 741, 742, 743, 744, 745, 746, 747, 748, 749, 750, 751, 752, 753, 754, 755, 756, 757, 758, 759, 760, 761, 762, 763, 764, 765, 766, 767, 768, 769, 770, 771, 772, 773, 774, 775, 776, 777, 778, 779, 780, 781, 782, 783, 784, 785, 786, 787, 788, 789, 790, 791, 792, 793, 794, 795, 796, 797, 798, 799, 800, 801, 802, 803, 804, 805, 806, 807, 808, 809, 810, 811, 812, 813, 814, 815, 816, 817, 818, 819, 820, 821, 822, 823, 824, 825, 826, 827, 828, 829, 830, 831, 832, 833, 834, 835, 836, 837, 838, 839, 840, 841, 842, 843, 844, 845, 846, 847, 848, 849, 850, 851, 852, 853, 854, 855, 856, 857, 858, 859, 860, 861, 862, 863, 864, 865, 866, 867, 868, 869, 870, 871, 872, 873, 874, 875, 876, 877, 878, 879, 880, 881, 882, 883, 884, 885, 886, 887, 888, 889, 890, 891, 892, 893, 894, 895, 896, 897, 898, 899, 900, 901, 902, 903, 904, 905, 906, 907, 908, 909, 910, 911, 912, 913, 914, 915, 916, 917, 918, 919, 920, 921, 922, 923, 924, 925, 926, 927, 928, 929, 930, 931, 932, 933, 934, 935, 936, 937, 938, 939, 940, 941, 942, 943, 944, 945, 946, 947, 948, 949, 950, 951, 952, 953, 954, 955, 956, 957, 958, 959, 960, 961, 962, 963, 964, 965, 966, 967, 968, 969, 970, 971, 972, 973, 974, 975, 976, 977, 978, 979, 980, 981, 982, 983, 984, 985, 986, 987, 988, 989, 990, 991, 992, 993, 994, 995, 996, 997, 998, 999, 1000.

Map Scale

0 25 50 100 Miles

0 4 8 16 Kilometers

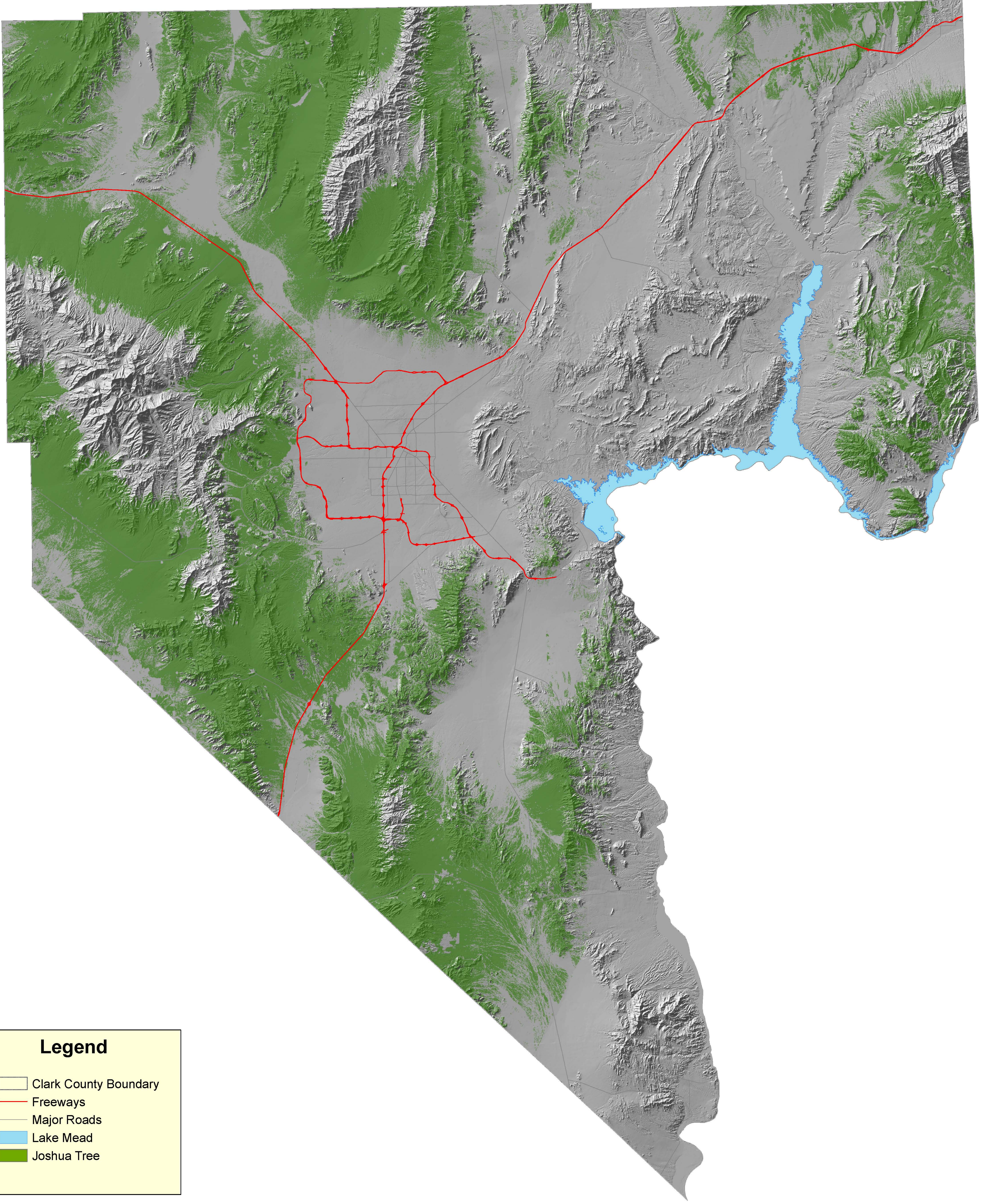
Scale 1:150,000

Projection: Universal Transverse Mercator, Zone 11, North American Datum 1983 (m)

Nevada Bureau of Mines and Geology  
Division of Geology and Earth Science  
1000 North Carson Street, Suite 100  
Reno, Nevada 89501  
775-335-2200  
www.nv.gov/nbmg

© 2010 Nevada Bureau of Mines and Geology  
All rights reserved. This map is a preliminary product and is not for use in any legal proceeding. The product is available free of charge to the public.





**Legend**

- Clark County Boundary
- Freeways
- Major Roads
- Lake Mead
- Joshua Tree



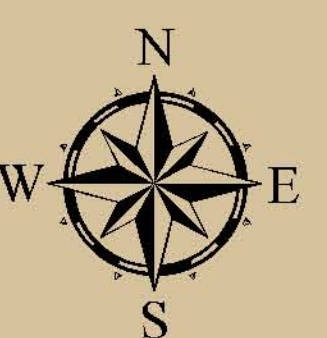
# Clark County

## Joshua Tree Model

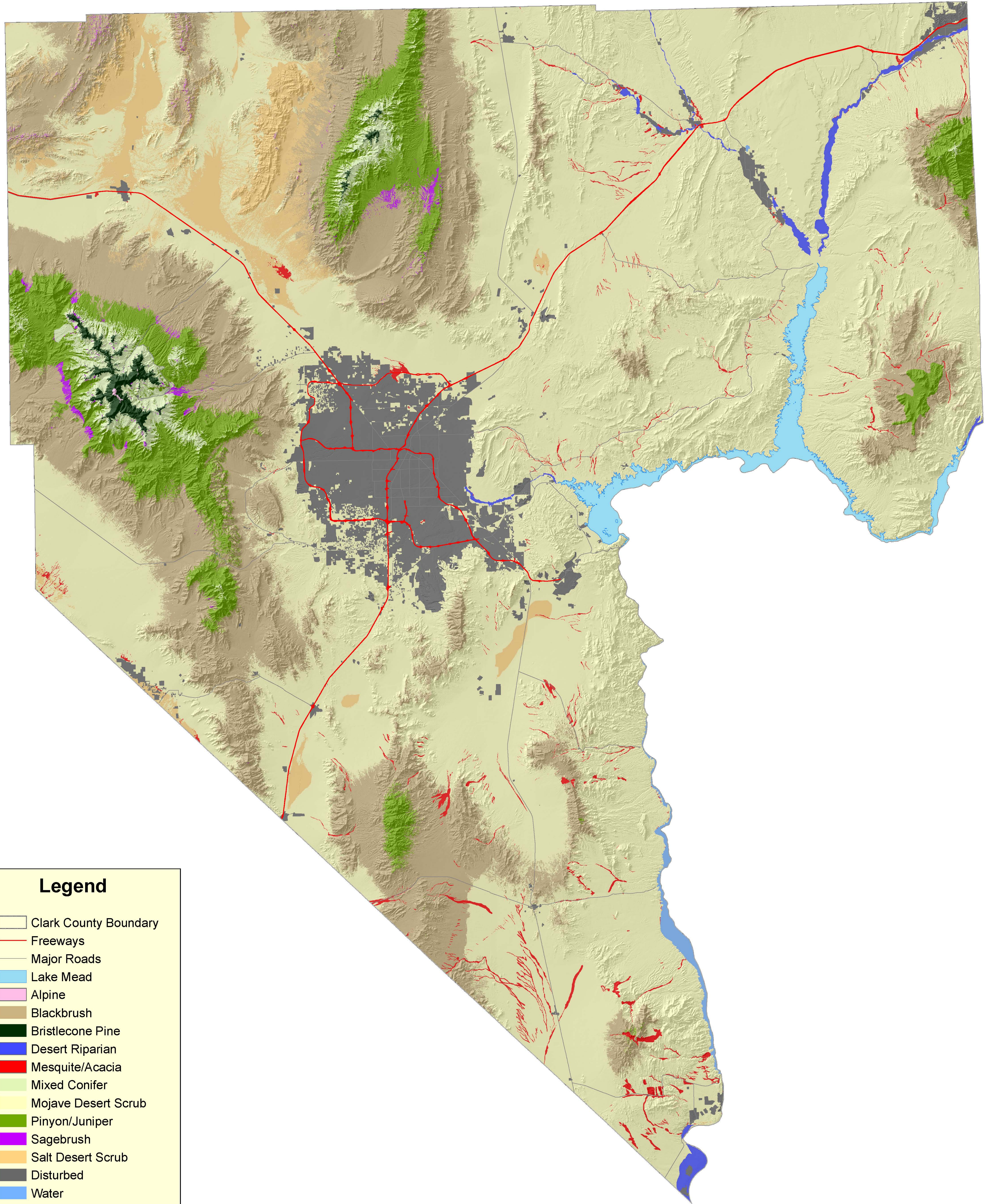


Projection: Transverse Mercator  
Coordinate System: UTM Zone 11  
Datum: NAD83  
Date: 7/27/2011

This information is for display only.  
No liability is assumed as to the  
accuracy of the data delineated  
hereon. (Draft - 7/27/11)  
Clark\_County\_yuccaposter.mxd







### Legend

-  Clark County Boundary
-  Freeways
-  Major Roads
-  Lake Mead
-  Alpine
-  Blackbrush
-  Bristlecone Pine
-  Desert Riparian
-  Mesquite/Acacia
-  Mixed Conifer
-  Mojave Desert Scrub
-  Pinyon/Juniper
-  Sagebrush
-  Salt Desert Scrub
-  Disturbed
-  Water



# Clark County Ecosystems



**Projection: Transverse Mercator**  
 Coordinate System: UTM Zone 11  
 Datum: NAD83  
 Date: 7/26/2011

*This information is for display only.  
 No liability is assumed as to the  
 accuracy of the data delineated  
 hereon. (Draft - 7/26/11)  
 Clark\_County\_vegposter.mxd*

